

TRAINING

DIARY DATES

MOVE FEATURE

MEET NATHALIE

## Glasgow and Wellington training – coming up in October



Register and pay online  
in a few easy steps.

Sign Up Now! >>



To find out more about our Move training courses, or to register, click [here](#).

### Important dates for your diary



#### EVENTS

AAPG ICE London: 15-18 Oct 17

GSL Handling Fault Seals, Baffles, Barriers and Conduits: 15-17 Nov 17

AAPG ACE Salt Lake City: 20-23 May 18

#### TRAINING

Glasgow: 9-13 Oct 17

Wellington: 24-27 Oct 17

Find out more about our TRAINING COURSES >>

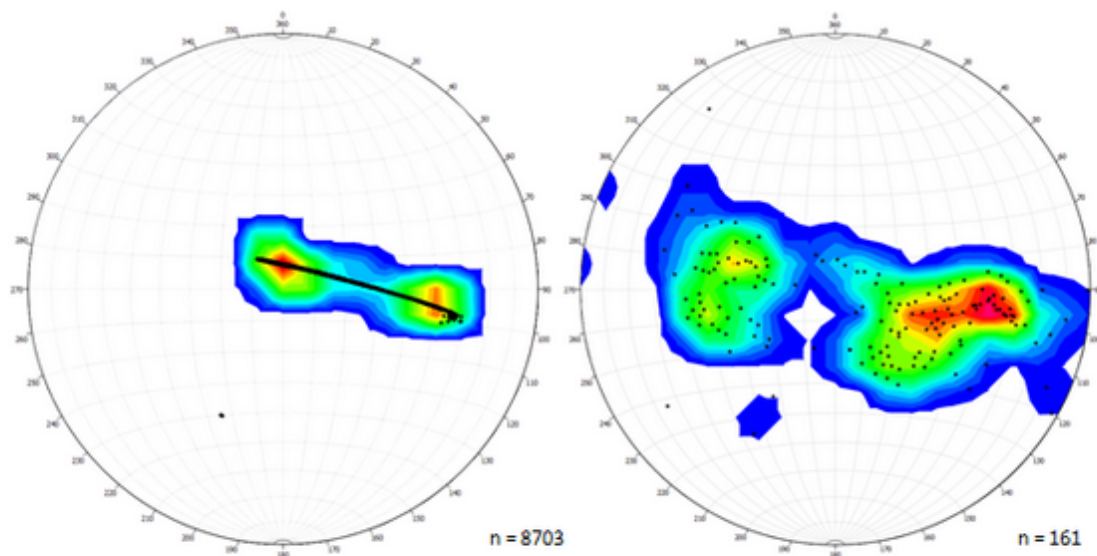
Find out more about the EVENTS WE'LL BE AT >>

## Monthly Move Feature

### Fracture modelling in Move: Part 2

#### Evaluating fracture sets and creating a discrete fracture network (DFN)

The **Fracture Modelling** module allows users to construct discrete fracture networks (DFNs) based on structural evolution. Following August's feature on the prediction of fracture orientations and intensities using the **3D Kinematic module** and the **Strain Capture tool**, this feature will show how predicted fracture orientations can be evaluated and will illustrate the workflow steps to construct a DFN. As per part 1, this feature will use the East Kaibab monocline in Utah as an example dataset to demonstrate these tools.



- a) Lower hemisphere equal area projection of poles to modelled fracture orientations;  
b) Lower hemisphere equal area projection of poles to measured fracture orientations.

To download the full feature, click [here](#). For a list of previous Features, click [here](#).

## Meet the people behind Move™

One of the reasons Midland Valley is the world leader in structural geology is because our geologists and software developers are leaders in their fields. We're lucky enough to work with a team of creative, innovative and passionate people – from all over the world – who are key to delivering cutting-edge software and services. So we'd like to introduce them to you.

### Meet Nathalie,

Nathalie joined Midland Valley in January 2014. She has been working in IT for the past nine years, concentrating mainly in desktop and remote support, as well as managing the licensing of Move. Previously she was a self-employed mortgage broker. Nathalie graduated with an MSc in Genetics from the University of Glasgow in 1997.

To read more about Nathalie, click [here](#).

