

[USER MEETING](#)

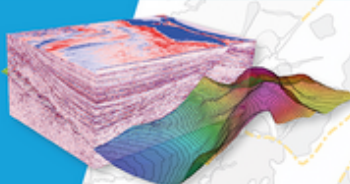
[DIARY DATES](#)

[MOVE FEATURE](#)

[TOP TIPS](#)

User Meeting

Meet the experts
and explore Move



**2018 User Meeting:
Houston, 29 May**



With only two weeks to go, make sure you save your seat.
Explore Move, meet the geology experts and discover the Petroleum Experts IPM suite.

You can also visit us at the AAPG ACE from 20-23 May in Salt Lake City

[Find out more >>](#)

[Sign up now! >>](#)

[Agenda for the day >>](#)

Important 2018 dates for your diary



EVENTS

AAPG ACE Salt Lake City: 20-23 May
EAGE Copenhagen: 11-14 June

USER MEETINGS

Houston: 29 May

TRAINING

Houston: 24-28 September
Edinburgh: 8-12 October

[Find out more about our
TRAINING COURSES >>](#)

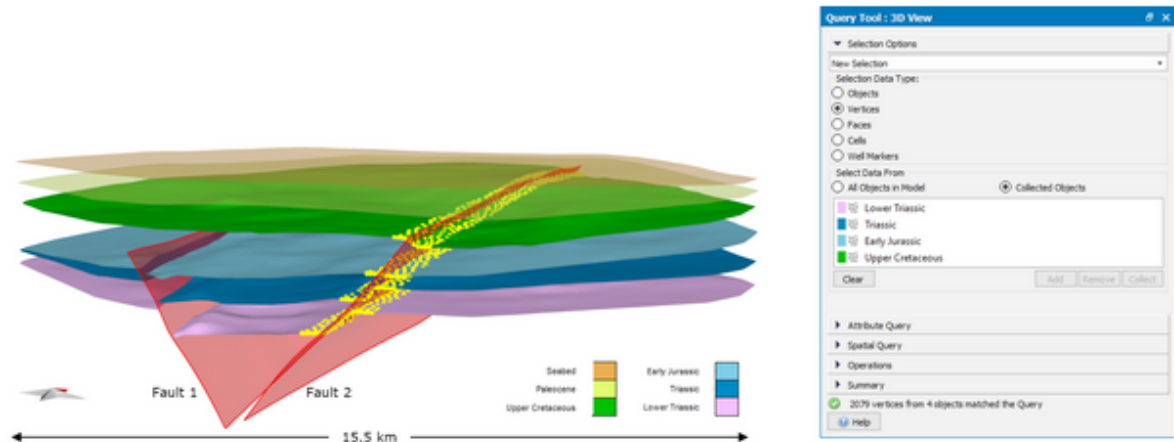
[Find out more about our
USER MEETINGS >>](#)

[Find out more about the
EVENTS WE'LL BE AT >>](#)

Monthly Move Feature

The Query Tool

The Query tool, found on the Data & Analysis tab in MoveTM, provides advanced methods for interrogating and filtering data. Query selections can be performed using any object attribute or on spatial relationships of, or between, objects in the model. Further modelling operations can then be applied to the results of the query. In this monthly feature, the Query tool is first used to carry out quick editing of a model derived from a North Sea dataset that would otherwise be very time consuming, then it is used to efficiently highlight the most suitable location for a well that intersects the reservoir.



To download the full feature, click [here](#). For a list of previous Features, click [here](#).

Stuart's Top Tips

Our experts share their knowledge, experience, and their tips and tricks for getting the most out of Move.

Did you know that you can use the Object Attribute Analyser on the Data & Analysis tab to quickly obtain the length and area of objects.

