

TRAINING

DIARY DATES

MOVE FEATURE

MEET MANOEL

Flexible training opportunities now available in Wellington, New Zealand

24-27 October 2017

Become a Move™ expert. Sign up now.



To register for our Wellington course, or any of our other training locations, click [here](#).

Important dates for your diary



EVENTS

AAPG ICE London: 15-18 October 2017
AAPG ACE Salt Lake City: 20-23 May 2018

TRAINING

Houston: 25-29 September 2017
Glasgow: 9-13 October 2017
Wellington: 24-27 October 2017

USER MEETING

Glasgow: September (TBC)

Find out more about our
TRAINING COURSES >>

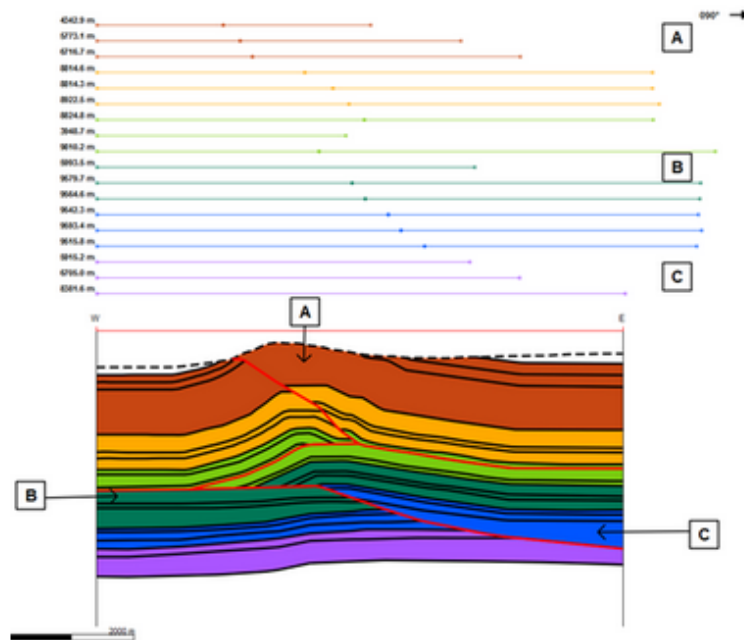
Find out more about our
USER MEETING >>

Find out more about
EVENTS WE'LL BE AT >>

Monthly Move Feature

Section Analysis

The **Section Analysis** tool in Move2017 allows quantification of the length, area and thickness of stratigraphic horizons in 2D. The results provide first-order constraints on the structural evolution of a region and help identify areas of interpretational uncertainty.



Interpreted section from the Wheeler Ridge anticline in California (Muller and Suppe, 1997). Results of Section Analysis calculation are displayed above the interpretation. Three areas of interest identified on the interpretation and their corresponding Section Analysis results.

To download the full feature, click [here](#). For a list of previous Features, click [here](#).

Meet the people behind Move™

One of the reasons Midland Valley is the world leader in structural geology is because our geologists and software developers are leaders in their fields. We're lucky enough to work with a team of creative, innovative and passionate people – from all over the world – who are key to delivering cutting-edge software and services. So we'd like to introduce them to you.

Meet Manoel,

Manoel joined Midland Valley in 2016, after having worked as a structural geologist at the Planageo Joint Venture. His work consisted of conducting geo-modelling and structural interpretations based on geophysical data from southern Angola. Manoel holds a PhD (Hons) with the Geomodels Research Institute of the University of Barcelona, in collaboration with the Spanish Geological Survey.

To read more about Manoel, click [here](#).

