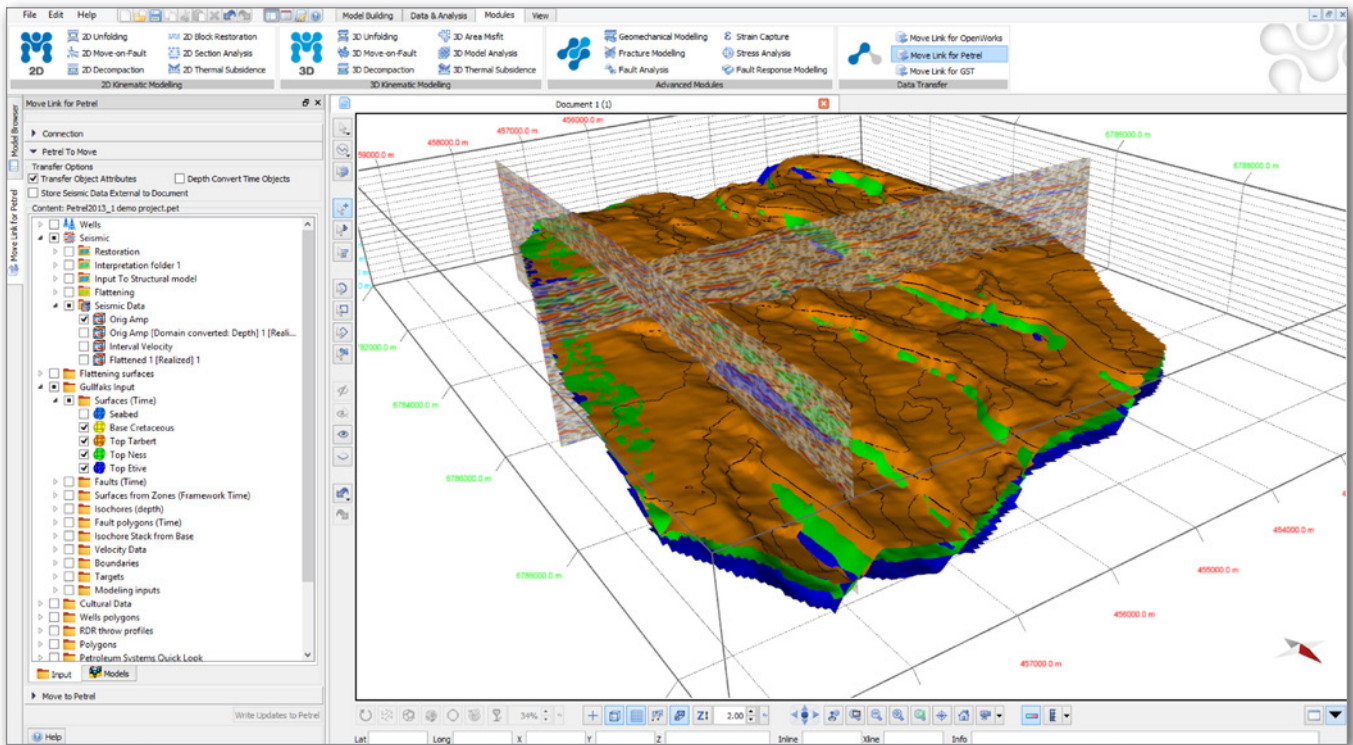


Move Link for Petrel



A fast, direct data link between the Move and the Petrel* application.
Utilise the power of the Move suite from Petrel



The Petrel input data tree and model data tree are now duplicated within Move, as can be seen on the left within the Move Model Browser. A 3D model featuring the Petrel demo dataset and colour mapping capabilities in Move is shown above. Changes to geometry and attributes are automatically detected.

Move Link for Petrel provides a means for Petrel users to share data with Midland Valley's structural modelling and analysis software suite.

Once data is in Move, it is possible to perform the full range of restoration, validation, balancing and advanced structural modelling workflows.

- Achieve fast, direct transfer of data from Petrel to Move and back again.
- The Petrel input data tree and model data tree navigation are fully integrated inside Move.
- Interactively add and remove data objects from the session, even if the connection between Move and Petrel is closed.
- Provides support for grids, surfaces, point set, triangle mesh, fault sticks, fault and horizon interpretation, fracture sets, 2D/3D seismic data and wells including markers.
- Automatically detects changes to geometry and attributes and allows these to be saved back to Petrel.

*Mark of Schlumberger

For more information please visit www.mve.com

T: +44 (0) 141 332 2681 E: info@mve.com

© Midland Valley 2018.

